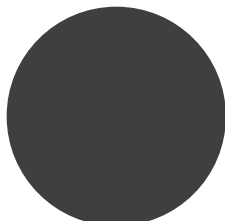
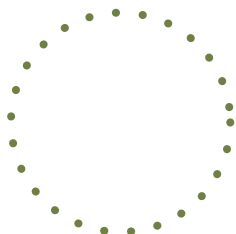


## WHAT IS Multi-Forest?

**Multi-Forest** is a Galician Operational Group that aims to obtain a multifunctional and resilient model of a forest through a continuous improvement in its management. It is expected that this will enhance the sustainability of the forest, as well as add value to its products and uses made in it.

**Multi-Forest** contributes to the revalorisation of the forest and agricultural sectors by revitalising lowproductivity areas, and providing viable, resilient alternatives to face the new scenarios of climate change. The objective is to develop compatible uses of the forest, both existent (forestry planting, extensive cattle farming, pasture, beekeeping, etc.) and new ones (cultivation of shiitake mushrooms and wild forest fruits). This leads to the diversification of forest activity through the development of eco-innovative measures and tools.



## What are OPERATIONAL GROUPS?

Operational Groups are the main actors involved the implementation of the AIE-Agri (Agricultural European Innovation Partnership for productive and sustainable agriculture). They are one of the key tools in the execution of the Common Agricultural Policy (CAP) 2023-2027 Strategic Plan that aims to impulse the innovation in the agri-food and forestry sectors in Europe. Operational Groups bring together various stakeholders such as farmers, livestock breeders, companies, and research, formation, and dissemination centres, who collaborate to initiate innovative projects addressing shared needs and offering a combined and multisectoral response to current challenges.

# multi forest

## Do you want to know more about Multi-Forest?

Please email [proyectosnacionales@feuga.es](mailto:proyectosnacionales@feuga.es)  
or call +34 981 53 41 80.



# multi forest

## Multifunctionality and comprehensive valorisation of the forest through the Chain of Custody Certification

Total project budget: 179.980,81 € Total grant: 179.980,81 €

This project is funded by the aid for the execution of innovative projects by Operational Groups of the Agricultural European Innovation Partnership (AEI-Agri). The funding breakdown for the project is as follows: The European Agricultural Fund for Rural Development (EAFRD) contributes the majority at 80%, followed by the Xunta de Galicia (Council of Galicia) at 14%, and the Ministerio de Agricultura, Pesca y Alimentación (Ministry of Agriculture, Fisheries and Food) at 6%. The Consellería do Medio Rural (Galician Ministry of Rural Development) is the Galician Administration authority responsible for proposing and executing the general guidelines in agriculture, livestock, rural development and regional planning, rural structures, agri-food and forestry industries, mountains, and prevention and defence against forest fires.

## Who are the **TARGET GROUPS** of Multi-Forest?



Forest maintenance groups and forest industry managers



Farmers and livestock breeders



Technology centres, research centres, and universities



Technological platforms



Service companies



Public administration related to agriculture, farming and forest activity, environment and/or rural development



Consumers and the general public

## What are the **OBJECTIVES** of Multi-Forest?

The main objective of the project is to promote the multifunctionality of the forest through its diversified and coordinated utilization. This will be accomplished through comprehensive valorisation of the forest's resources, and the development of an innovative proposal and management plan for their optimal use. To achieve this, it is necessary to explore new opportunities for the revalorisation of Galician rural areas through application of resilient, competitive, viable, and diverse agroforestry practices.

First, a suitability analysis of the forest using satellite technologies will be performed to evaluate the feasibility of establishing small areas for cultivation of wild fruits and shiitake mushrooms. Meanwhile, the project will seek certification for the chain of custody of honey and horse meat, as well as their by-products. Additionally, it will conclude with an analysis of the multifunctional management footprint on the forest.



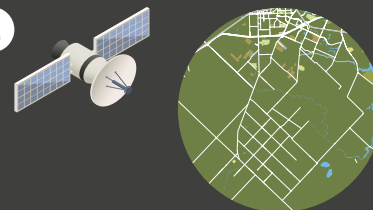
## Multi-Forest **ACTIVITIES**

1



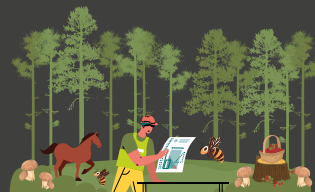
Characterisation of the study area and identification of needs and potential of each zone.

2



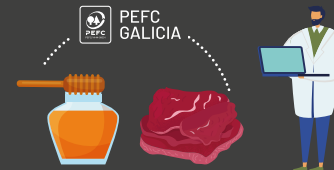
Utilization of satellite images for the multifunctional design of the forest.

3



Design and implementation of a sustainable and multifunctional forest model.

4



Ensuring traceability for honey and horse meat and their by-products through the PEFC chain of custody certification.

5



Estimation of economic, social, and environmental benefits.

6



Implementation of the dissemination plan.

## What are the expected **RESULTS** of Multi-Forest?

The project aims to establish a new agro-sylvo-pastoral productive system characterized by high diversity and competitiveness. This will be achieved by leveraging the ecological potential of various forest areas and integrating them with existing uses. Additionally, the project will add value by consolidating PEFC sustainable forest certification, with a special focus on certifying the chain of custody of the resulting non-wood products. All actions will prioritise environmental, social, and economic considerations, aiming to enhance the competitiveness of rural areas while promoting Galician natural and traditional heritage.



## Who are the **MEMBERS** of Multi-Forest?

Operational Group **Multi-Forest** is coordinated by the **Fundación Empresa Universidad Gallega (FEUGA)**, with the participation of the **Comunidade de Montes Veciñais en Man Común de Baroña (CMVMC Baroña)**, the **Asociación Galega Promotora da Certificación Forestal (PEFC Galicia)**, and the **University of Vigo (UVigo)** through **Agroforestry Engineering (AF4)** research group.



Universidade de Vigo